

12.72 (501) ~ 40.64 (1600)	+0.03 -0.25
5.10 (201) ~ 12.70 (500)	+0.03 -0.20
1.78 (070) ~ 5.09 (200)	+0.03 -0.10
0 ~ 1.77 (069)	+0.03 -0.05
DIMENSION A & B (MILS)	TOLERANCE (MM)

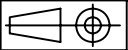
NOTE:
 13-140A-01 HAS BEEN OBSOLETE & NEW DESIGN AVAILABLE
 AS 13-140-01M

PART NO.	A	B	C	D	ØE	HOLDER
13-140A-28	5.15	9.40	1.5	3.5	1.0	12C
13-140A-27	9.30	13.05	3.5	5.4	2.0	12D3
13-140A-26	10.55	13.90	4.2	5.5	2.0	12D3
13-140A-25	5.10	6.50	1.6	2.3	1.0	12C
13-140A-24	5.25	5.50	1.7	1.8	1.0	12C
13-140A-23	11.10	13.10	4.5	5.5	2.0	12D3
13-140A-22	6.00	7.50	2.0	2.8	1.0	12C
13-140A-21	7.50	9.00	2.8	3.5	1.0	12C
13-140A-20	Available as R7X-1200-0600-0					12C
13-140A-19	8.00	11.00	3.0	4.5	1.0	12C
13-140A-18	12.0	12.0	5.0	5.0	1.0	12C
13-140A-17	10.00	10.00	4.0	4.0	1.0	12C
13-140A-16	15.00	15.00	6.5	6.5	2.0	12D3
13-140A-15	10.00	10.00	3.8	3.8	1.0	12C
13-140A-14	9.00	9.00	3.5	3.5	1.0	12C
13-140A-13	5.50	8.00	1.8	3.0	1.0	12C
13-140A-12	6.80	10.10	2.4	4.0	1.0	12C
13-140A-11	6.80	8.30	2.4	3.1	1.0	12C
13-140A-10	8.40	9.40	3.2	3.6	1.0	12C
13-140A-09	7.00	8.00	2.6	3.0	1.0	12C
13-140A-08	11.00	14.00	4.6	5.9	2.0	12D3
13-140A-07	8.50	11.20	3.3	4.6	1.0	12C
13-140A-06	11.00	11.00	2.2	2.2	1.5	12C
13-140A-05	5.00	7.00	1.6	2.5	1.0	12C
13-140A-04	11.00	11.00	4.0	4.0	1.0	12C
13-140A-03	6.00	8.00	2.0	2.7	1.0	12C
13-140A-02	6.00	6.00	2.0	2.0	1.0	12C
13-140A-01	8.00	8.00	3.0	3.0	1.0	12C

**SALES COPY
 UNCONTROLLED DOCUMENT**

Copying of this document and giving it to others and the use of communication of the contents thereof are forbidden without express authority. Offenders are liable to the payment of damages. All rights are reserved in the event of the grant of a patent or the registration of a utility model or design.

TOLERANCE UNLESS SPECIFIED X.X ±0.10 GENERAL TOL. ±0.2 X.XX ±0.05 ANGLE ±0.5° SURFACE FINISH 1.6/√ REMOVE BURRS AND SHARP EDGES ALL DIMENSIONS IN MM. <small>13-99-027 R03</small>	MATERIAL: NBR MICRO-MECHANICS PTE LTD mmsingapore@micro-mechanics.com TEL: 67468800 FAX: 67467700	PROCESS: —	TITLE: RUBBER TIP (X-GROOVE)	REV.:
		DATE: 12-2-09		79
		DRAFTSMAN: HS TOK	SCALE: DRAWING NO: 13-140A-XX	SHEET 1
		CHECKER: DESMOND		3




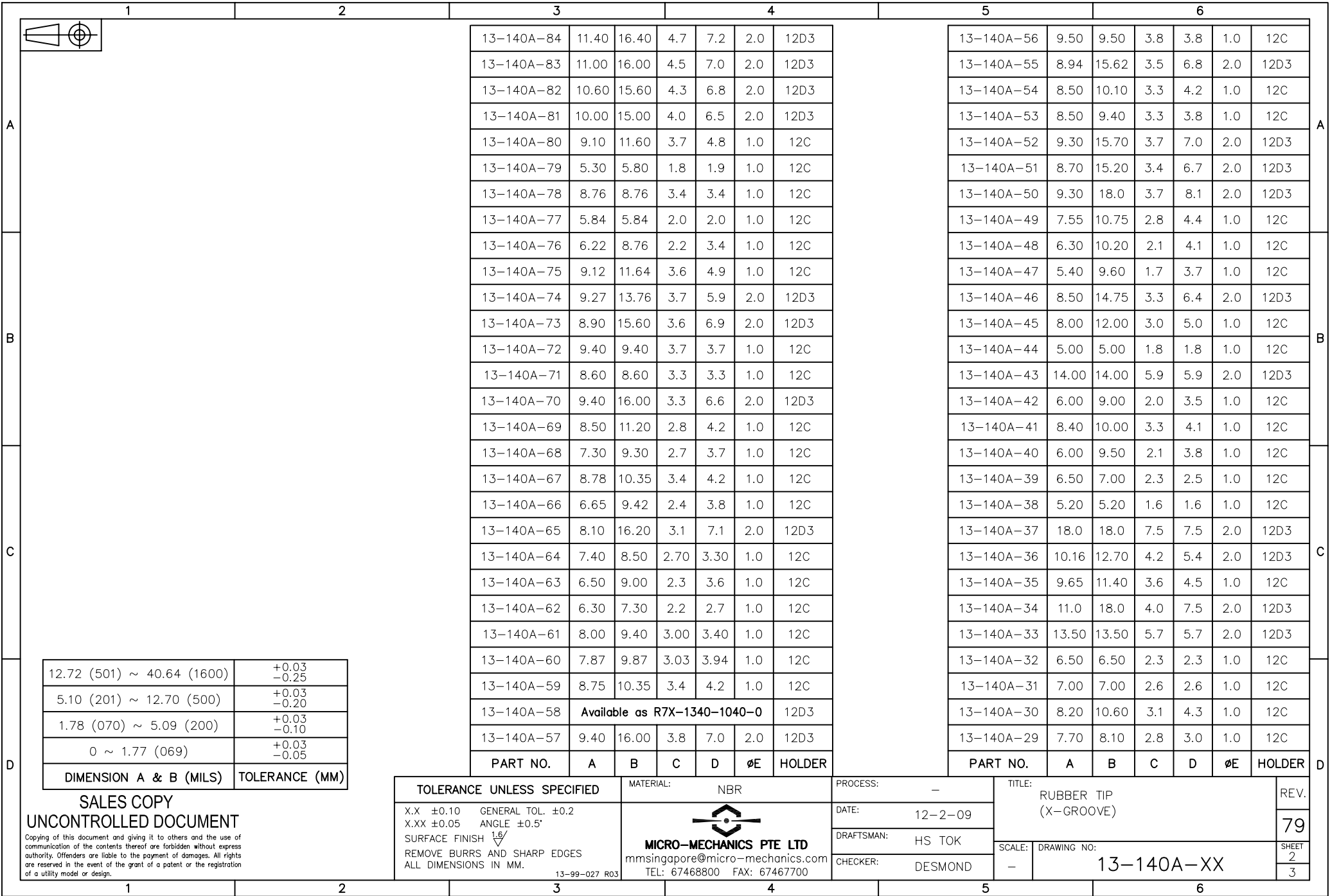
1		2		3				4				5				6				
A				13-140A-84	11.40	16.40	4.7	7.2	2.0	12D3			13-140A-56	9.50	9.50	3.8	3.8	1.0	12C	A
				13-140A-83	11.00	16.00	4.5	7.0	2.0	12D3			13-140A-55	8.94	15.62	3.5	6.8	2.0	12D3	
				13-140A-82	10.60	15.60	4.3	6.8	2.0	12D3			13-140A-54	8.50	10.10	3.3	4.2	1.0	12C	
				13-140A-81	10.00	15.00	4.0	6.5	2.0	12D3			13-140A-53	8.50	9.40	3.3	3.8	1.0	12C	
				13-140A-80	9.10	11.60	3.7	4.8	1.0	12C			13-140A-52	9.30	15.70	3.7	7.0	2.0	12D3	
				13-140A-79	5.30	5.80	1.8	1.9	1.0	12C			13-140A-51	8.70	15.20	3.4	6.7	2.0	12D3	
				13-140A-78	8.76	8.76	3.4	3.4	1.0	12C			13-140A-50	9.30	18.0	3.7	8.1	2.0	12D3	
				13-140A-77	5.84	5.84	2.0	2.0	1.0	12C			13-140A-49	7.55	10.75	2.8	4.4	1.0	12C	
				13-140A-76	6.22	8.76	2.2	3.4	1.0	12C			13-140A-48	6.30	10.20	2.1	4.1	1.0	12C	
				13-140A-75	9.12	11.64	3.6	4.9	1.0	12C			13-140A-47	5.40	9.60	1.7	3.7	1.0	12C	
				13-140A-74	9.27	13.76	3.7	5.9	2.0	12D3			13-140A-46	8.50	14.75	3.3	6.4	2.0	12D3	
				13-140A-73	8.90	15.60	3.6	6.9	2.0	12D3			13-140A-45	8.00	12.00	3.0	5.0	1.0	12C	
				13-140A-72	9.40	9.40	3.7	3.7	1.0	12C			13-140A-44	5.00	5.00	1.8	1.8	1.0	12C	
				13-140A-71	8.60	8.60	3.3	3.3	1.0	12C			13-140A-43	14.00	14.00	5.9	5.9	2.0	12D3	
				13-140A-70	9.40	16.00	3.3	6.6	2.0	12D3			13-140A-42	6.00	9.00	2.0	3.5	1.0	12C	
				13-140A-69	8.50	11.20	2.8	4.2	1.0	12C			13-140A-41	8.40	10.00	3.3	4.1	1.0	12C	
				13-140A-68	7.30	9.30	2.7	3.7	1.0	12C			13-140A-40	6.00	9.50	2.1	3.8	1.0	12C	
				13-140A-67	8.78	10.35	3.4	4.2	1.0	12C			13-140A-39	6.50	7.00	2.3	2.5	1.0	12C	
				13-140A-66	6.65	9.42	2.4	3.8	1.0	12C			13-140A-38	5.20	5.20	1.6	1.6	1.0	12C	
				13-140A-65	8.10	16.20	3.1	7.1	2.0	12D3			13-140A-37	18.0	18.0	7.5	7.5	2.0	12D3	
				13-140A-64	7.40	8.50	2.70	3.30	1.0	12C			13-140A-36	10.16	12.70	4.2	5.4	2.0	12D3	
				13-140A-63	6.50	9.00	2.3	3.6	1.0	12C			13-140A-35	9.65	11.40	3.6	4.5	1.0	12C	
				13-140A-62	6.30	7.30	2.2	2.7	1.0	12C			13-140A-34	11.0	18.0	4.0	7.5	2.0	12D3	
				13-140A-61	8.00	9.40	3.00	3.40	1.0	12C			13-140A-33	13.50	13.50	5.7	5.7	2.0	12D3	
				13-140A-60	7.87	9.87	3.03	3.94	1.0	12C			13-140A-32	6.50	6.50	2.3	2.3	1.0	12C	
				13-140A-59	8.75	10.35	3.4	4.2	1.0	12C			13-140A-31	7.00	7.00	2.6	2.6	1.0	12C	
				13-140A-58	Available as R7X-1340-1040-0					12D3			13-140A-30	8.20	10.60	3.1	4.3	1.0	12C	
				13-140A-57	9.40	16.00	3.8	7.0	2.0	12D3			13-140A-29	7.70	8.10	2.8	3.0	1.0	12C	
				PART NO.	A	B	C	D	ØE	HOLDER			PART NO.	A	B	C	D	ØE	HOLDER	

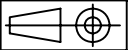
12.72 (501) ~ 40.64 (1600)	+0.03 -0.25
5.10 (201) ~ 12.70 (500)	+0.03 -0.20
1.78 (070) ~ 5.09 (200)	+0.03 -0.10
0 ~ 1.77 (069)	+0.03 -0.05
DIMENSION A & B (MILS)	TOLERANCE (MM)

**SALES COPY
UNCONTROLLED DOCUMENT**

Copying of this document and giving it to others and the use of communication of the contents thereof are forbidden without express authority. Offenders are liable to the payment of damages. All rights are reserved in the event of the grant of a patent or the registration of a utility model or design.

TOLERANCE UNLESS SPECIFIED		MATERIAL: NBR		PROCESS: -		TITLE: RUBBER TIP (X-GROOVE)		REV.	
X.X ±0.10 GENERAL TOL. ±0.2		 MICRO-MECHANICS PTE LTD mmsingapore@micro-mechanics.com TEL: 67468800 FAX: 67467700		DATE: 12-2-09		SCALE: DRAWING NO: 13-140A-XX		99	
X.XX ±0.05 ANGLE ±0.5°				DRAFTSMAN: HS TOK				2	
SURFACE FINISH 1.6/√				CHECKER: DESMOND				3	
REMOVE BURRS AND SHARP EDGES		13-99-027 R03							
ALL DIMENSIONS IN MM.									






1		2		3		4		5			6				
A								13-140A-112	7.90	11.60	2.9	4.8	1.0	12C	A
								13-140A-111	9.10	13.30	3.6	5.2	2.0	12D3	
								13-140A-110	9.10	14.60	3.6	5.7	2.0	12D3	
								13-140A-109	7.10	8.50	2.6	3.3	1.0	12C	
								13-140A-108	10.80	13.60	4.4	5.8	2.0	12D3	
								13-140A-107	8.45	11.60	3.2	4.8	1.0	12C	
								13-140A-106	5.84	7.37	1.9	2.7	1.0	12C	
								13-140A-105	7.50	7.93	2.8	3.0	1.0	12C	
								13-140A-104	7.89	10.09	3.0	4.1	1.0	12C	
								13-140A-103	5.08	7.92	1.6	3.0	1.0	12C	
B								13-140A-102	7.00	12.00	2.5	5.0	1.0	12C	B
								13-140A-101	8.30	11.40	3.2	4.7	1.0	12C	
								13-140A-100	7.90	10.20	3.0	4.1	1.0	12C	
								13-140A-99	6.70	9.40	2.4	3.7	1.0	12C	
								13-140A-98	6.10	8.80	2.1	3.4	1.0	12C	
								13-140A-97	7.80	11.00	3.0	4.5	1.0	12C	
								13-140A-96	10.90	14.55	4.5	6.3	2.0	12D3	
								13-140A-95	10.50	13.00	4.4	5.5	2.0	12D3	
								13-140A-94	15.00	18.00	6.5	8.1	2.0	12D3	
								13-140A-93	9.75	15.90	3.9	7.0	2.0	12D3	
C								13-140A-92	9.50	10.55	3.8	4.3	1.0	12C	C
								13-140A-91	10.50	15.85	4.3	7.0	2.0	12D3	
								13-140A-90	13.00	13.00	5.5	5.5	2.0	12D3	
								13-140A-89	10.80	13.60	4.4	5.8	2.0	12D3	
								13-140A-88	9.30	15.50	3.7	6.8	2.0	12D3	
								13-140A-87	15.60	17.80	6.8	7.9	2.0	12D3	
								13-140A-86	7.70	10.00	2.9	4.1	1.0	12C	
								13-140A-85	12.00	17.00	5.0	7.5	2.0	12D3	
								13-140A-123	12.90	16.10	5.4	7.0	2.0	12D3	
								13-140A-122	7.70	7.70	2.8	2.8	1.0	12C	
D								13-140A-121	10.50	10.50	4.2	4.2	1.0	12C	D
								13-140A-120	6.90	6.90	2.4	2.4	1.0	12C	
								13-140A-119	8.80	12.50	3.4	5.2	2.0	12D3	
								13-140A-118	8.30	9.50	3.2	3.8	1.0	12C	
								13-140A-117	6.80	9.00	2.4	3.5	1.0	12C	
								13-140A-116	7.00	10.00	2.6	4.1	1.0	12C	
								13-140A-115	7.60	7.60	2.8	2.8	1.0	12C	
								13-140A-114	9.24	12.92	3.6	5.4	2.0	12D3	
								13-140A-113	5.90	11.0	1.9	4.5	1.0	12C	
								PART NO.	A	B	C	D	ØE	HOLDER	

12.72 (501) ~ 40.64 (1600)	+0.03 -0.25
5.10 (201) ~ 12.70 (500)	+0.03 -0.20
1.78 (070) ~ 5.09 (200)	+0.03 -0.10
0 ~ 1.77 (069)	+0.03 -0.05
DIMENSION A & B (MILS)	TOLERANCE (MM)

**SALES COPY
UNCONTROLLED DOCUMENT**

Copying of this document and giving it to others and the use of communication of the contents thereof are forbidden without express authority. Offenders are liable to the payment of damages. All rights are reserved in the event of the grant of a patent or the registration of a utility model or design.

TOLERANCE UNLESS SPECIFIED		MATERIAL: NBR		PROCESS: -		TITLE: RUBBER TIP (X-GROOVE)		REV.:	
X.X ±0.10 GENERAL TOL. ±0.2		 MICRO-MECHANICS PTE LTD mmsingapore@micro-mechanics.com TEL: 67468800 FAX: 67467700		DATE: 12-2-09		SCALE: DRAWING NO: 13-140A-XX		79	
X.XX ±0.05 ANGLE ±0.5°				DRAFTSMAN: HS TOK				SHEET 3	
SURFACE FINISH 1.6/√				CHECKER: DESMOND				3	
REMOVE BURRS AND SHARP EDGES		13-99-027 R03							
ALL DIMENSIONS IN MM.									

